

HT-Series Correct Connect®

ISO16028 Flushface Male Threaded Bulkhead Couplers

Body Size	Threads	Steel Part #
1/2"	13/16"-16 ORFS BH	4HTRB4
	7/8" - 14 JIC BH	4HTJB5
	1" - 14 ORFS BH	4HTRB5
	1-1/16" - 12 JIC BH	4HTJB6
	1-3/16"-12 ORFS BH	4HTRB6



4HTJB5



4HTRB5

ISO16028 Flushface Male Threaded Bulkhead Plugs

Body Size	Threads	Steel Part #
1/2"	13/16"-16 ORFS BH	HT4RB4
	7/8" - 14 JIC BH	HT4JB5
	1" - 14 ORFS BH	HT4RB5
	1-1/16" - 12 JIC BH	HT4JB6
	1-3/16"-12 ORFS BH	HT4RB6



HT4JB5



HT4RB5

ISO16028 Flushface 90° Female Threaded Couplers

Body Size	Threads	Steel Part #
1/2"	9/16"-18 ORB	4HT9OF3
	3/4" - 16 ORB	4HT9OF4



ISO16028 Flushface 90° Female Threaded Plugs

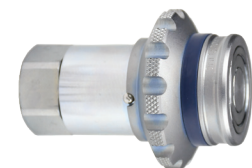
Body Size	Threads	Steel Part #
1/2"	9/16-18 ORB	HT49OF3
	3/4" - 16 ORB	HT49OF4



K

ISO16028 Flushface Interchange Coupler with Flange Sleeve

Body Size	Threads	Part #
1/2"	1/2" - 14 NPTF	4HTF4-FS
3/4"	3/4" - 14 NPTF	6HTF6-FS



ISO16028 Flushface Coupler Dust Plugs

Body Size	Nitrile Part #
1/4"	2HTDP
3/8"	3HTDP
1/2"	4HTDP
5/8"	5HTDP
3/4"	6HTDP
1"	8HTDP



ISO16028 Flushface Plug Dust Caps

Body Size	Nitrile Part #
1/4"	HT2DC
3/8"	HT3DC
1/2"	HT4DC
5/8"	HT5DC
3/4"	HT6DC
1"	HT8DC

